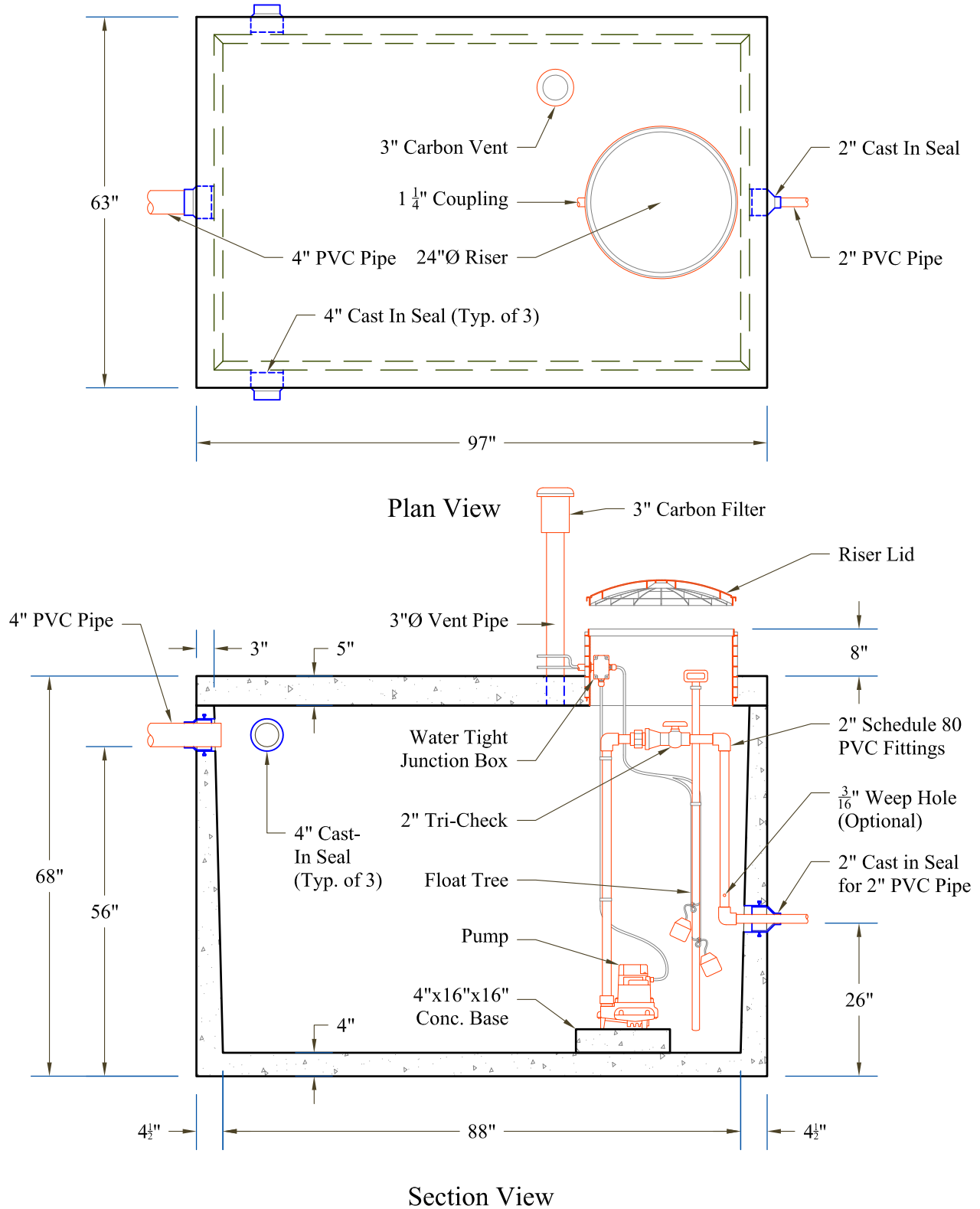


247 Gallon Per Vertical Foot



Weight: ±10,430 lbs.

Design Notes:

- Reinforced to Meet H-10 Loading
- Additional Risers Sold Separately
- Concrete Minimum 5000 psi at 28 days
- Stainless Steel Band Eliminates Grouting
- Cast In Seals Designed to Accept 2" & 4" PVC Pipe
- PVC Inlet & Outlet Tees & Residential Filter Provided

Customer Notes:

- Tank should not have any more than 3' of fill over the top slab

CD