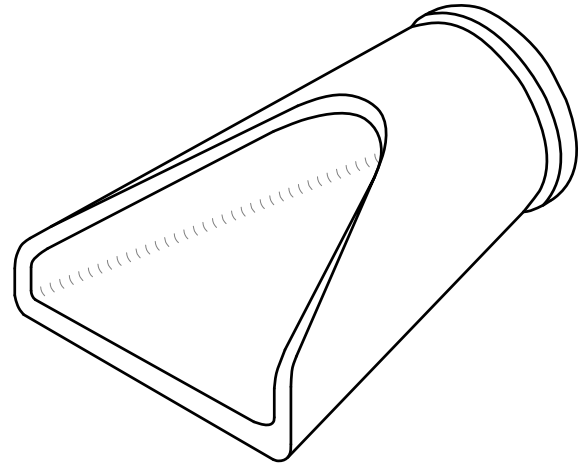
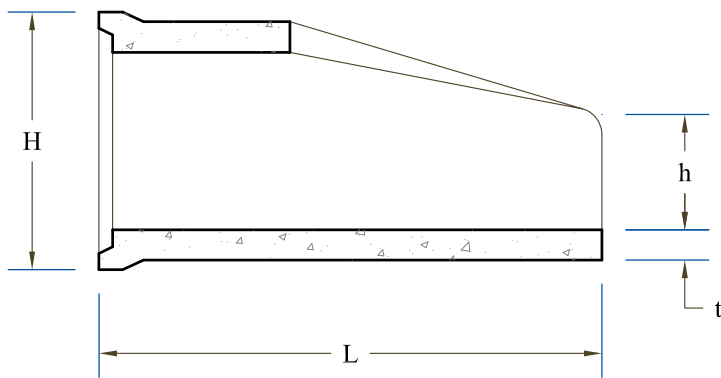


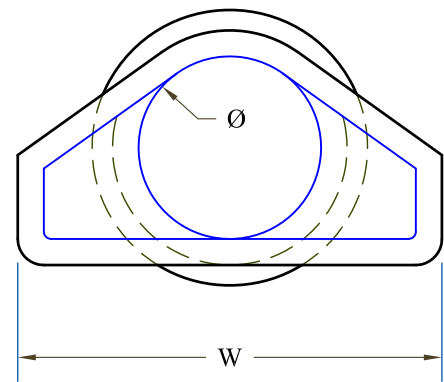
Plan View



Isometric View



Section View



End View

Dimensions

End	Ø	L	W	H	h	t	A	B	lbs.*
Bell	12"	79"	28"	20½"	4"	2"	55"	24"	650
Spigot	12"	79"	28"	20½"	4"	2"	55"	24"	650
Bell	15"	86"	34"	24"	11"	2¼"	61"	25"	740
Spigot	15"	69"	34"	24"	11"	2¼"	44"	25"	740
Bell	18"	84"	41"	28"	13"	2½"	58"	26"	1,325
Spigot	18"	84"	41"	28"		2½"	58"	26"	1,325
Bell	30"	76"	67"	38"	17½"	3½"	23½"	52½"	2,200
Spigot	30"	76"	67"	38"	17½"	3½"	23½"	52½"	2,200
Bell	36"	76"	67"	45"	19"	4"	23½"	52½"	4,300
Spigot	36"	76"	67"	45"	19"	4"	23½"	52½"	4,300

*Weight May Vary

Design Notes:

- Concrete Minimum 5000 psi at 28 days
- Grade 60 Steel Reinforcing
- Lifting Devices Included on Ø30" & Ø36" Ends